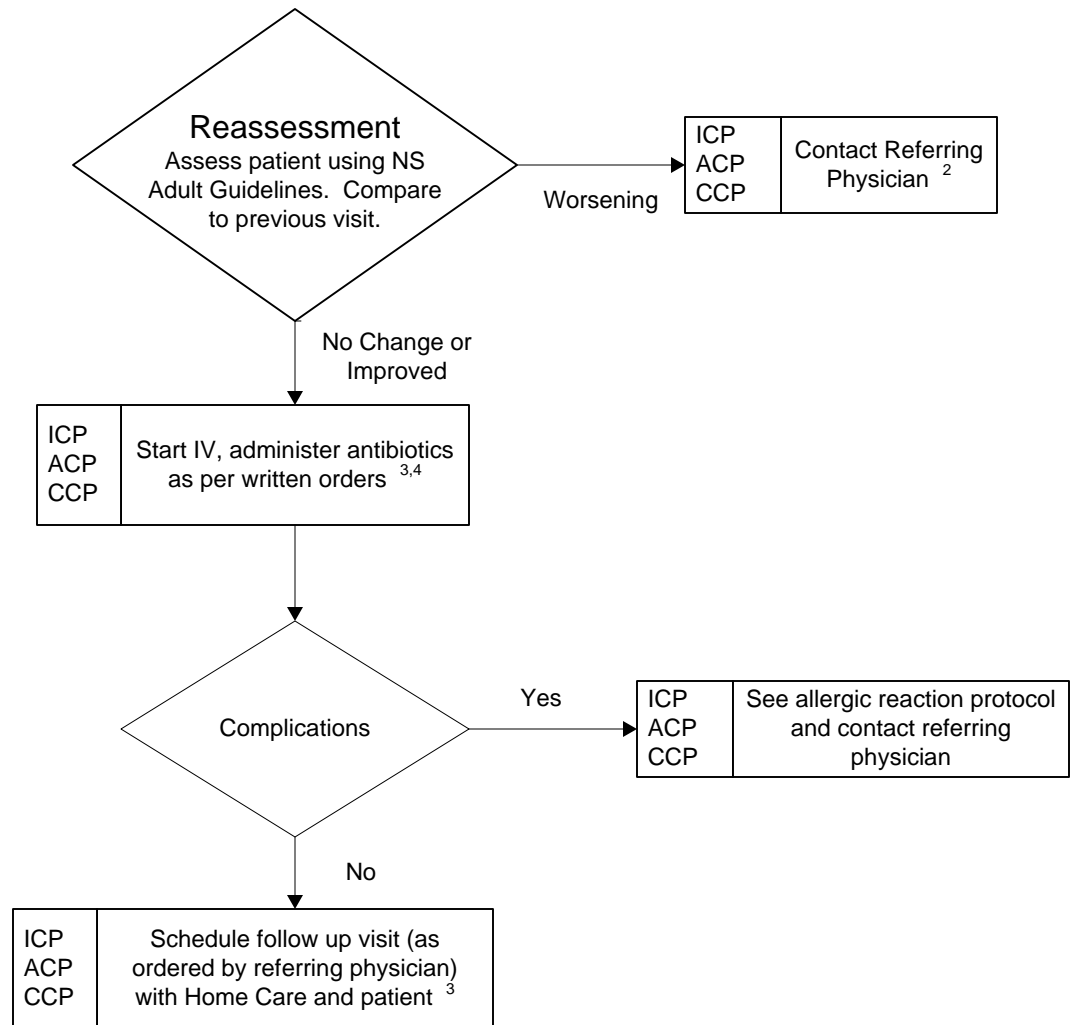


Protocol: Follow up Evaluation of Skin Infection	PDN: 6504.01	Last updated: May 14, 2003	Subject: Acute, Scheduled Care	Page 1
---	---------------------	-----------------------------------	---------------------------------------	--------



1. For follow up assessments, delineate with pen the area of infection.
2. If unable to contact referring physician, call On Line Physician or transport to hospital.
3. If subsequent IV treatments will be required at less than eight (8) hour intervals, place saline lock.
4. In unable to start on IV, check with referring physician or On Line Physician about IM Injection.

NB: See Appendix A for NS Adult Cellulitis Guidelines for Grading Scale.